

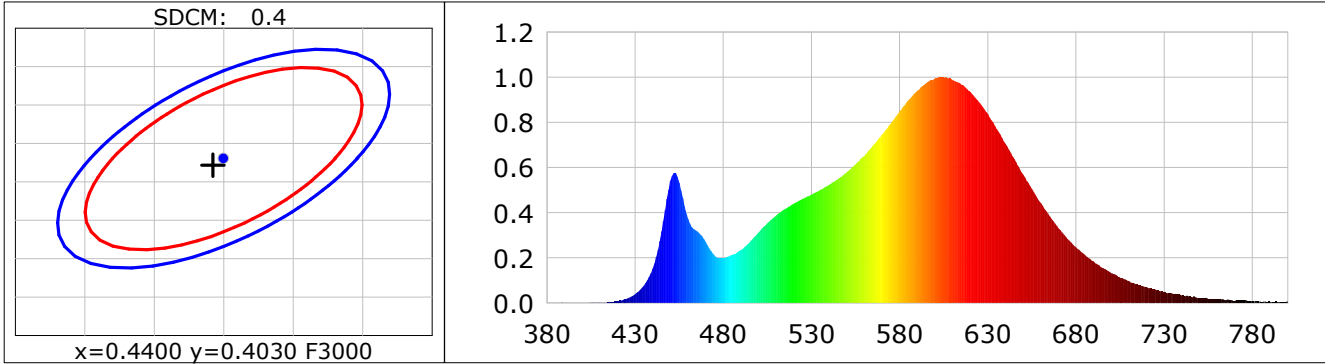
Lightsource Test Report

Product Infomation

Product Category: LED STRIP	Product Type: LED STRIP
Product Spec: VOLX 7	Product Number: 269
Manufacturer: TECSOLED S.L.	Buyer: TECSOLED S.L.

CIE Colorimetric Parameters

Chromaticity coordinates: $x=0.4392$ $y=0.4022$ $u(u')=0.2529$ $v=0.3473$ $v'=0.5210$
 CCT: $T_c=2946K$ ($duv=-0.00107$) Color Ratio: $R=0.235$ $G=0.738$ $B=0.027$
 Peak Wavelength: 606.0nm Half Bandwidth: 120.6nm
 Dominant Wavelength: 583.4nm Color Purity: 0.526
 CRI: $R_a=82.8$, $avgR(1\sim14)=77.8$, $avgR(1\sim15)=77.6$ TM30: $R_f=84$, $R_g=95$
 GAI: $GAI_BB_8=95.6$, $GAI_BB_15=103.6$, $GAI_EES=53.4$
 R1 =82 R2 =92 R3 =95 R4 =81 R5 =83 R6 =92 R7 =80 R8 =58
 R9 =7 R10=83 R11=81 R12=73 R13=85 R14=98 R15=74
 Color Quality Scale: $Q_a=82.6$, $Q_f=84.3$, $Q_p=84.0$, $Q_g=91.3$
 Q1 =78 Q2 =94 Q3 =84 Q4 =80 Q5 =83 Q6 =84 Q7 =84 Q8 =86
 Q9 =95 Q10=91 Q11=87 Q12=84 Q13=83 Q14=72 Q15=74



Photometric Parameters

Luminous Flux: 1025.2 lm Efficiency: 118.00 lm/W Radiant Power: 3.096 W
 Total mains efficacy: 109.27 lm/W Energy Efficiency Class: F (EU 2019/2015)

Electric Parameters

Voltage: 12.000V Current: 0.7240A Power: 8.69W
 Power Factor: 1.0000 Frequency: 0.00Hz

Test Infomation

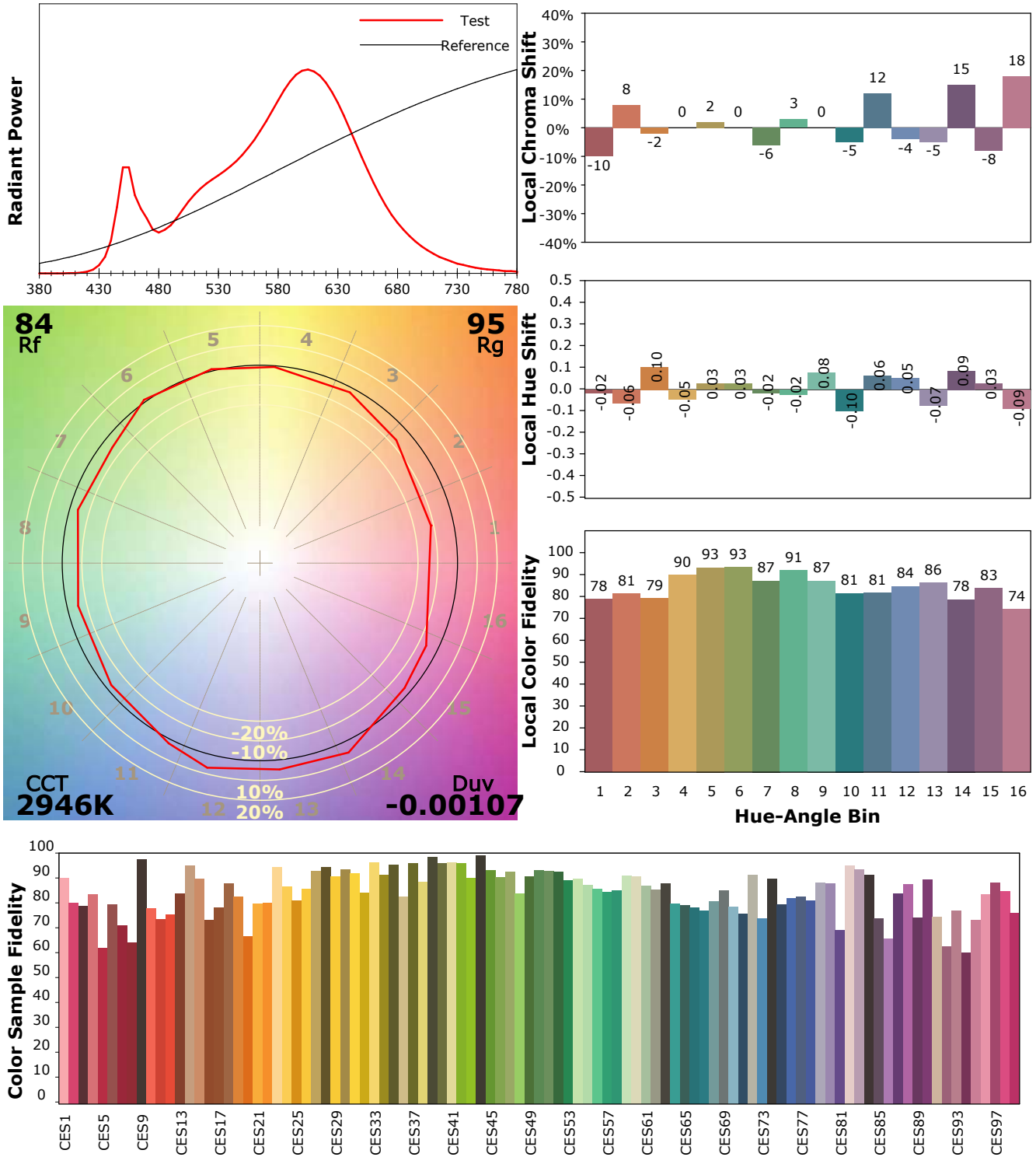
Scan Range: 380~800:1nm Photometric Method: sphere-spectroradiometer
 Stabilization Time: 20 Sec ALC.: 1.0000 Photometric Condition: Sphere diameter: 1.50m, 4PI
 Max of Signal: 46369 (2211) CCD Integration Time: 699.41 ms

IES TM-30-18 Color Rendition Report

Product Information

Product Category: LED STRIP
 Product Spec: 21059602440575
 Manufacturer: TECSOLELED S.L.

Product Type: LED STRIP
 Product Number: 269
 Buyer: TECSOLELED S.L.



Condition: Tx:18.9°C, Ti:18.4°C, R.H.:60%
 Test Lab: TECSOLELED S.L.
 Operator: JORDAN GIL DIAZ

Test Device: Inventfine CMS-2S (Plus)
 Test Time: 2021-10-29 10:24:02
 Inspector: